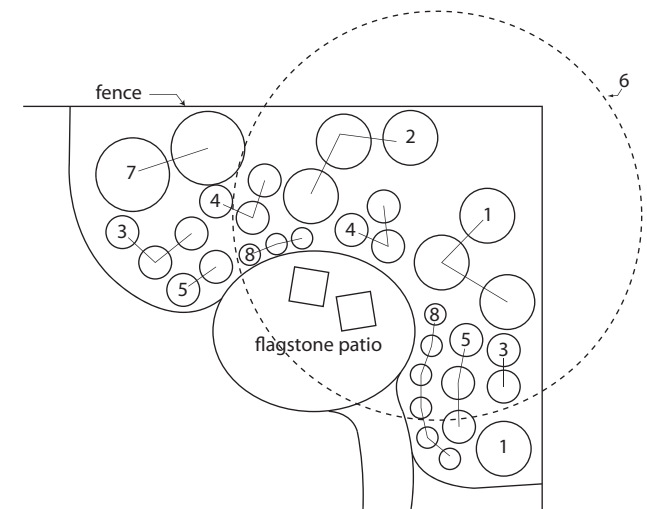


Coach's Concepts

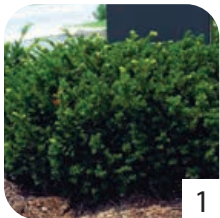
#11 Corner Retreat



Where colour lives!



Don't forget to use transplant fertilizer and TERRA Plus 3 mix around each plant.



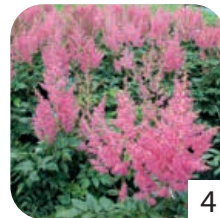
Yew
↓ 1m ↔ 1m
Qty: 4



Hydrangea
↓ 1m ↔ 1m
Qty: 3



Fern
↓ 0.5m ↔ 0.5m
Qty: 5



Astilbe
↓ 1m ↔ 1m
Qty: 6



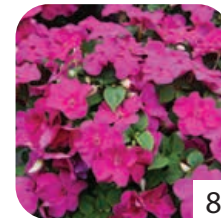
Hosta
↓ 1m ↔ 1m
Qty: 5



Linden Tree
↓ 15m ↔ 15m
Qty: 1



Summer Snowflake Viburnum
↓ 1.5m ↔ 1.5m
Qty: 2



Seasonal Colour